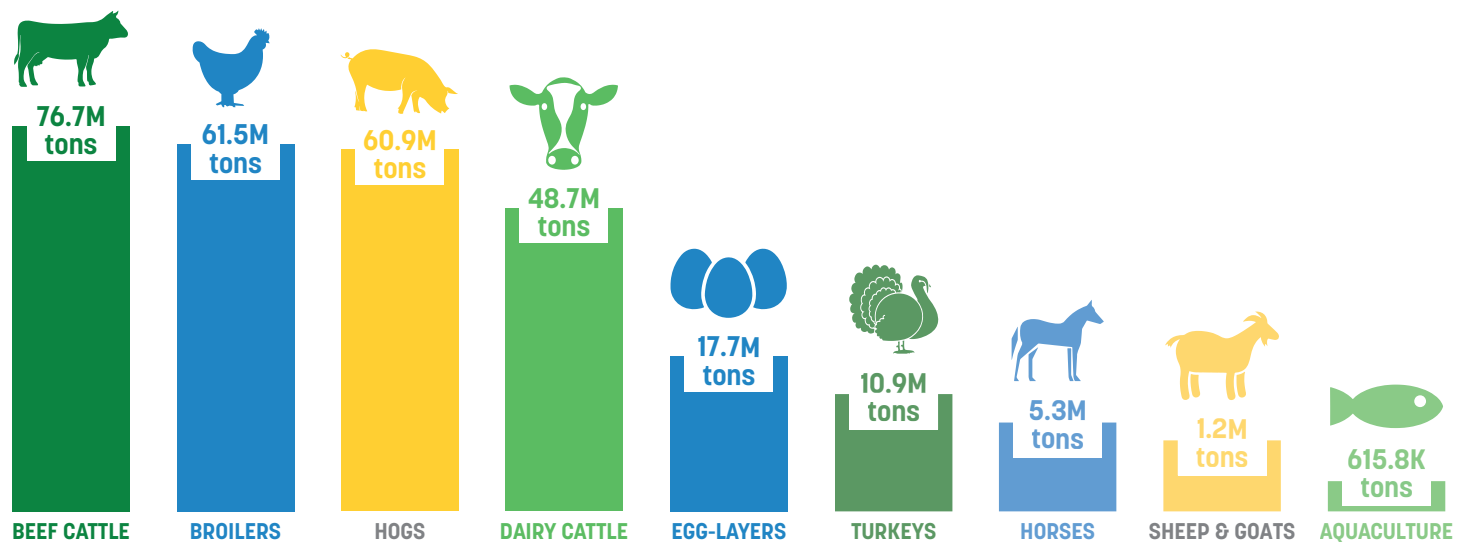




# Animal Food Is Critical to Agricultural Productivity, Rural Economies

Across the United States, nearly 5,650 animal food manufacturing facilities are committed to producing safe and nutritious feed for livestock, poultry and aquaculture annually. In 2023, U.S. livestock, poultry and farmed aquaculture consumed nearly 284 million tons of safe, high-quality and nutritious feed. The animal food industry is a vital part of the agricultural supply chain, supporting animal health and well-being while contributing to the economy and national food security.



In 2023, nearly 284 million tons of animal food were consumed by domestic livestock, poultry and aquaculture.<sup>1</sup>

## Top 5 Feed Ingredients



**159.4M TONS**  
Corn



**35.4M TONS**  
Soybean Meal



**32.6M TONS**  
Corn DDGs

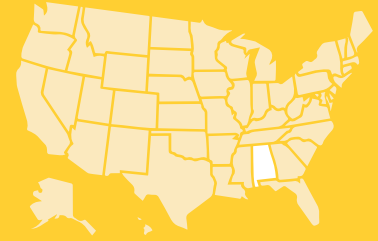


**5.6M TONS**  
Wheat Middlings



**5.2M TONS**  
Canola Meal

## Alabama



With hundreds of agricultural ingredients on the market, animal nutritionists have many choices when formulating nutritious diets for animals at their various life stages. They use everything from major agricultural commodities and coproducts, like soybean oil, dried distillers' grains or bakery meal, to supplements, vitamins, minerals and amino acids. Formulations are selected based on ingredient accessibility in the regions where animals are raised to offer the most affordable options for farmers and ranchers. See which animal species top the list in Alabama below!

## Alabama By The Numbers

### Top 5 Animal Species by Consumption



**8 M TONS**  
Broilers



**1.3 M TONS**  
Beef Cattle



**519.8 K TONS**  
Layers



**114.5 K TONS**  
Aquaculture



**95.4 K TONS**  
Horses

### Top 5 U.S. Feed Ingredients Alabama Usage



**5.1 M TONS**  
Corn



**2.8 M TONS**  
Soybean Meal



**303.1 K TONS**  
Corn DDGs



**65.4 K TONS**  
Wheat Middlings



**809 TONS**  
Canola Meal